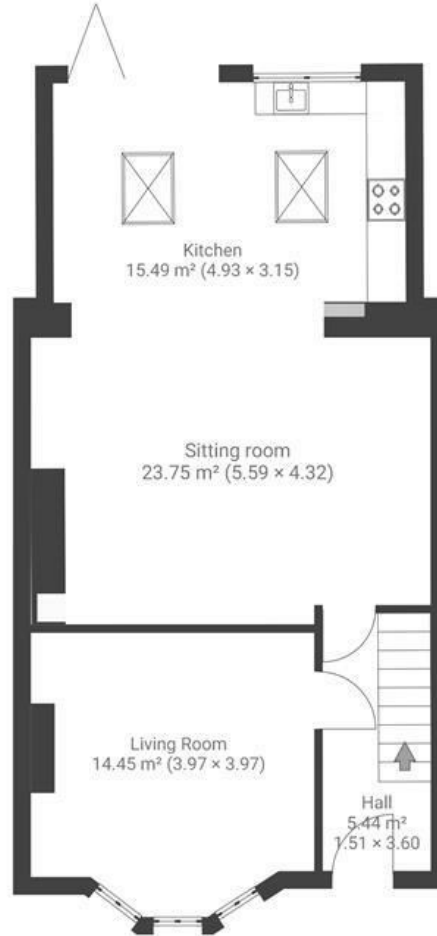
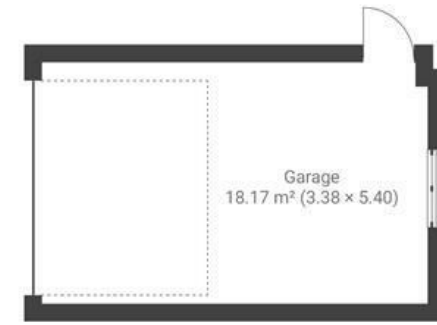


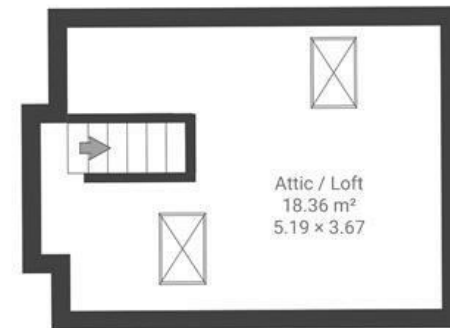
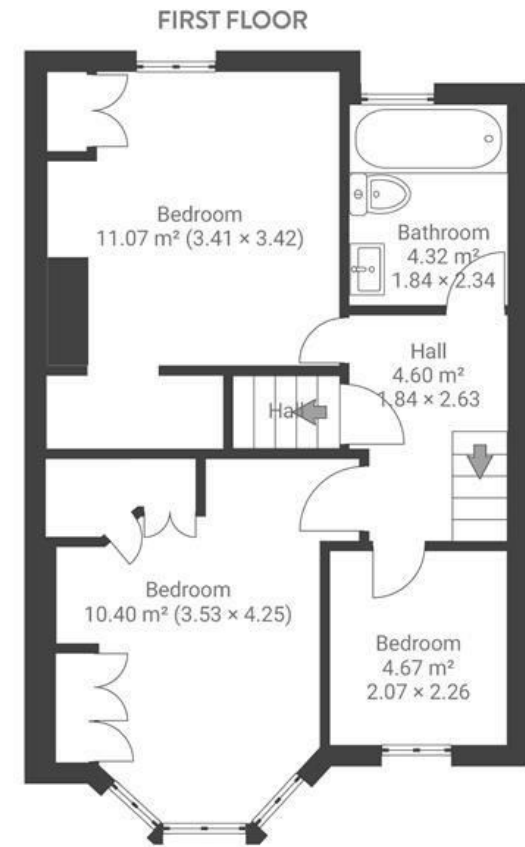
Bloomfield Road

BRISLINGTON

APPROXIMATE FLOOR AREA
122 SQM / 1313 SQFT



GROUND FLOOR



SECOND FLOOR

Boardwalk

Bloomfield Road , BRISTOL

£
£475,000

zzz
3 Bedrooms

📍
BS4 3QP

🦆
1 Bathrooms

"Some of our favourite moments have been hosting friends in the open-plan kitchen-diner, sliding open the bifold doors onto the garden for summer BBQs, and enjoying the evening sun as hot air balloons drift overhead. The house has a lovely balance between bright, sociable spaces and a cosy front room for quieter evenings. With the added convenience of rear access and a garage, it's a comfortable home that feels welcoming and has been wonderful to live in for the past eight years."

